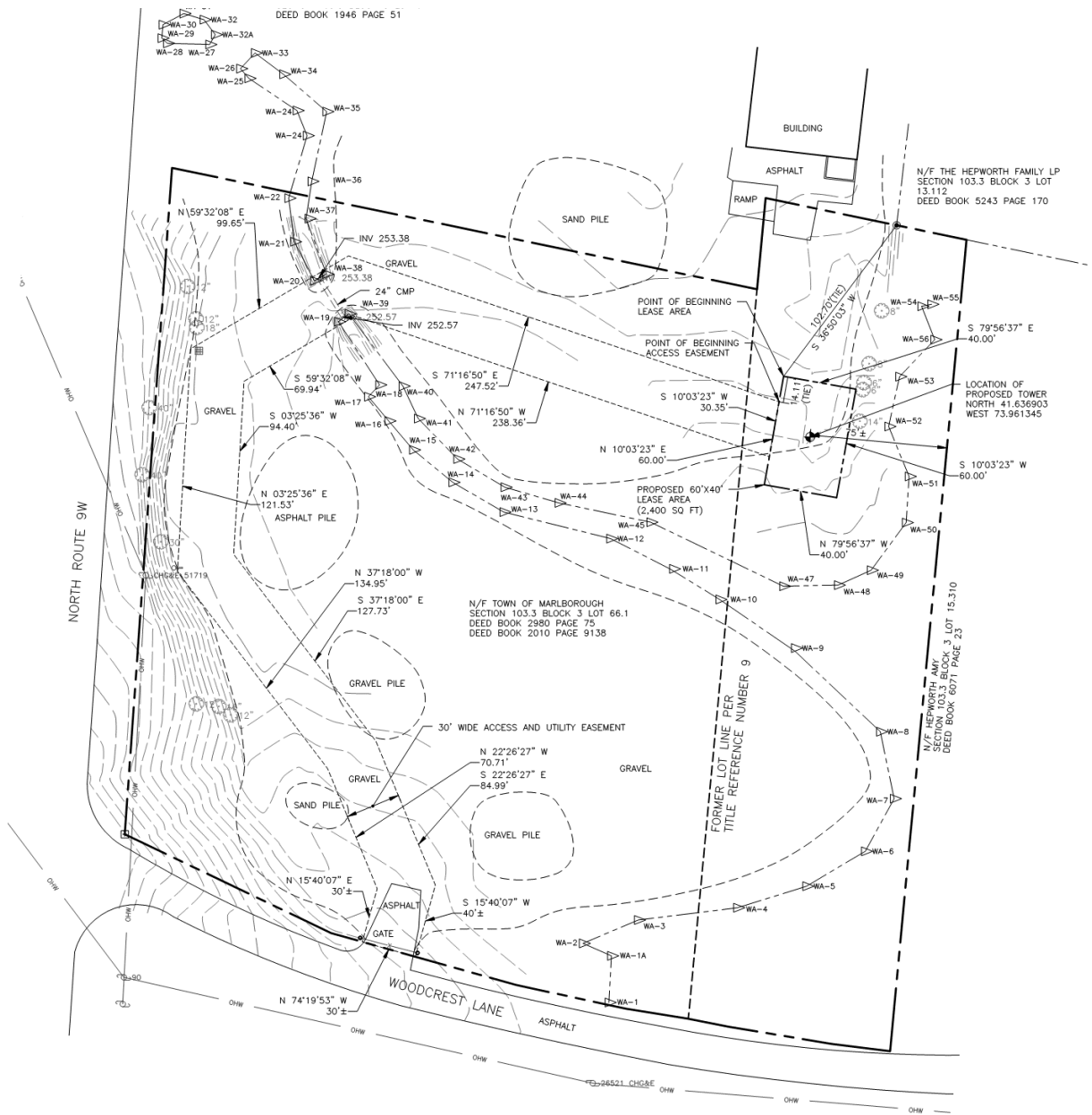


EXHIBIT "B" (CONTINUED)



LEASE AND EASEMENT PARCELS – AS PROVIDED:

ALL THAT CERTAIN PLOT, PIECE OR PARCEL OF LAND SITUATE, LYING AND BEING IN THE TOWN OF MARLBOROUGH, COUNTY OF ULSTER, STATE OF NEW YORK, BEING MORE PARTICULARLY BOUNDED AND DESCRIBED AS FOLLOWS:

BEGINNING AT THE NORTHEASTERN CORNER OF THE HEREIN DESCRIBED LEASE PARCEL; SAID POINT BEING SOUTH 36°50'03" WEST FOR A DISTANCE OF 102.70 FEET FROM AN IRON ROD AT THE COMMON CORNER AT THE LANDS NOW OR FORMERLY TOWN OF MARLBOROUGH SECTION 103.3, BLOCK 3, LOT 66.1, AND NOW OR FORMERLY TOWN OF MARLBOROUGH SECTION 103.3, BLOCK 3, LOT 67 AND NOW OR FORMERLY THE HEPWORTH FAMILY LP SECTION 103.3, BLOCK 3, LOT 13.112; RUNNING THENCE SOUTH 10°03'23" WEST FOR A DISTANCE OF 14.11 FEET TO A POINT; RUNNING THENCE

SOUTH 10°03'23" WEST FOR A DISTANCE OF 30.35 FEET TO A POINT; THENCE
NORTH 71°16'50" WEST FOR A DISTANCE OF 238.36 FEET TO A POINT; THENCE
SOUTH 59°32'08" WEST FOR A DISTANCE OF 69.94 FEET TO A POINT; THENCE
SOUTH 03°25'36" WEST FOR A DISTANCE OF 94.40 FEET TO A POINT; THENCE
SOUTH 37°18'00" EAST FOR A DISTANCE OF 127.73 FEET TO A POINT; THENCE
SOUTH 22°26'27" EAST FOR A DISTANCE OF 84.99 FEET TO A POINT; THENCE
SOUTH 15°40'07" WEST FOR A DISTANCE OF 40+/- FEET TO A POINT ON THE NORTHERLY SIDELINE OF WOODCREST LANE; THENCE
ALONG SAID SIDELINE, NORTH 74°19'53" WEST FOR A DISTANCE OF 30+/- FEET TO A POINT; THENCE
LEAVING SAID SIDELINE, NORTH 15°40'07" EAST FOR A DISTANCE OF 30+/- FEET TO A POINT; THENCE
NORTH 22°26'27" WEST FOR A DISTANCE OF 70.71 FEET TO A POINT; THENCE
NORTH 37°18'00" WEST FOR A DISTANCE OF 134.95 FEET TO A POINT; THENCE
NORTH 03°25'36" EAST FOR A DISTANCE OF 121.53 FEET TO A POINT; THENCE
NORTH 59°32'08" EAST FOR A DISTANCE OF 99.65 FEET TO A POINT; THENCE
SOUTH 71°16'50" EAST FOR A DISTANCE OF 247.52 FEET TO THE POINT OF BEGINNING.

CONTAINING 20,404 SQUARE FEET

BEGINNING AT THE NORTHEASTERN CORNER OF THE HEREIN DESCRIBED LEASE PARCEL; SAID POINT BEING SOUTH 36°50'03" WEST FOR A DISTANCE OF 102.70 FEET FROM AN IRON ROD AT THE COMMON CORNER AT THE LANDS NOW OR FORMERLY TOWN OF MARLBOROUGH SECTION 103.3, BLOCK 3, LOT 66.1, AND NOW OR FORMERLY TOWN OF MARLBOROUGH SECTION 103.3, BLOCK 3, LOT 67 AND NOW OR FORMERLY THE HEPWORTH FAMILY LP SECTION 103.3, BLOCK 3, LOT 13.112; RUNNING THENCE
SOUTH 79°56'37" EAST FOR A DISTANCE OF 40.00 FEET TO A POINT; THENCE
SOUTH 10°03'23" WEST FOR A DISTANCE OF 60.00 FEET TO A POINT; THENCE
NORTH 79°56'37" WEST FOR A DISTANCE OF 40.00 FEET TO A POINT; THENCE
NORTH 10°03'23" EAST FOR A DISTANCE OF 60.00 FEET TO A POINT; THENCE TO THE POINT OF BEGINNING.

CONTAINING 2,400 SQUARE FEET