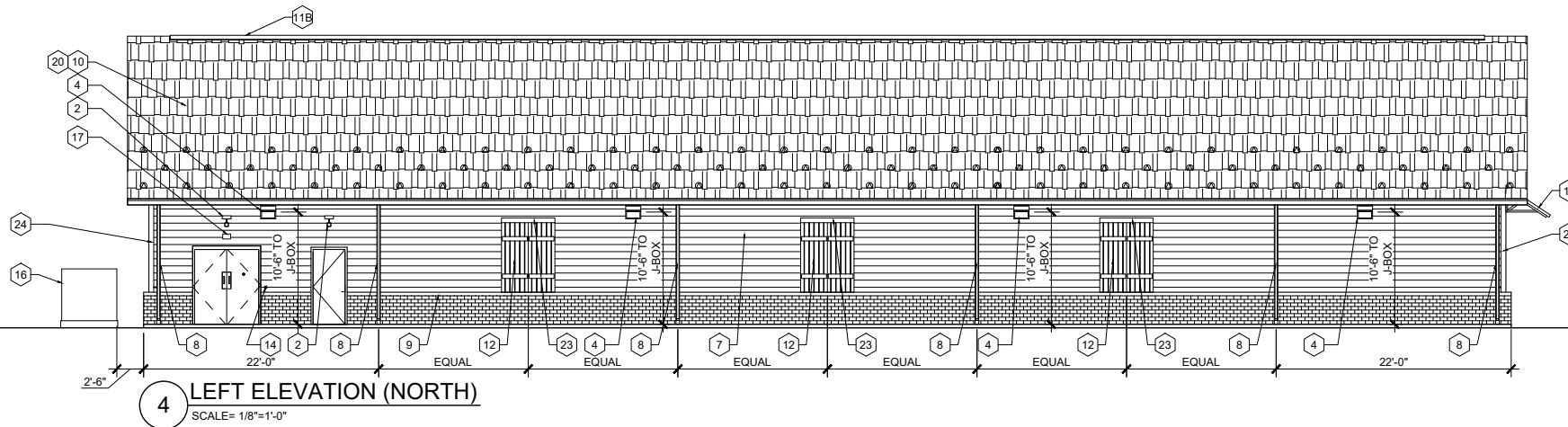
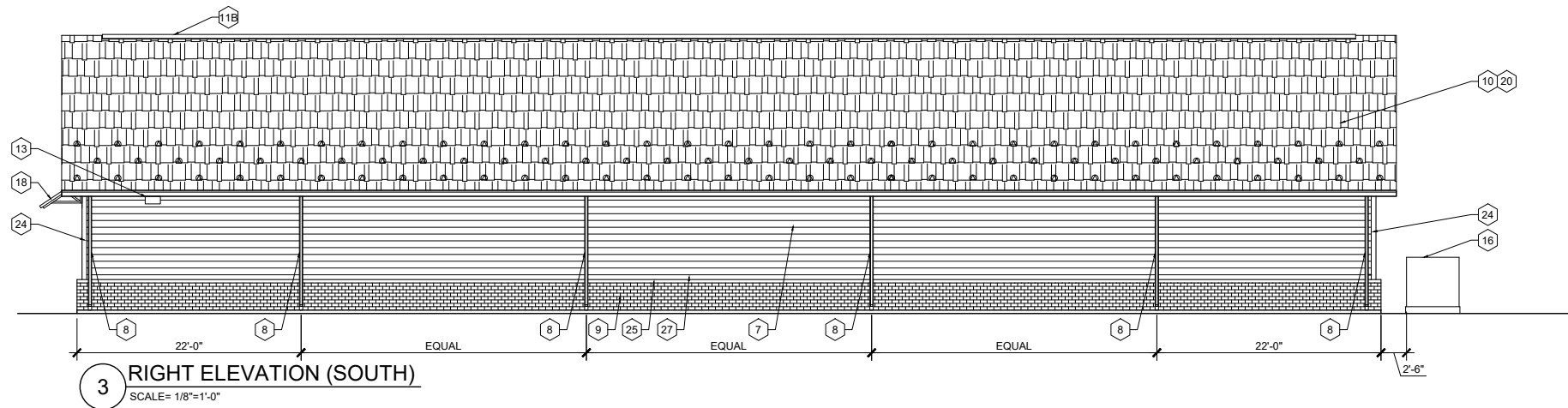
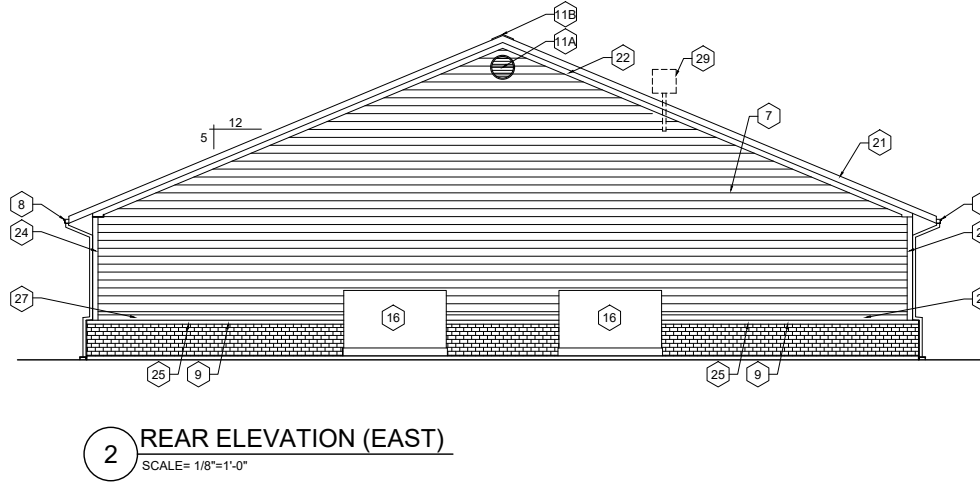
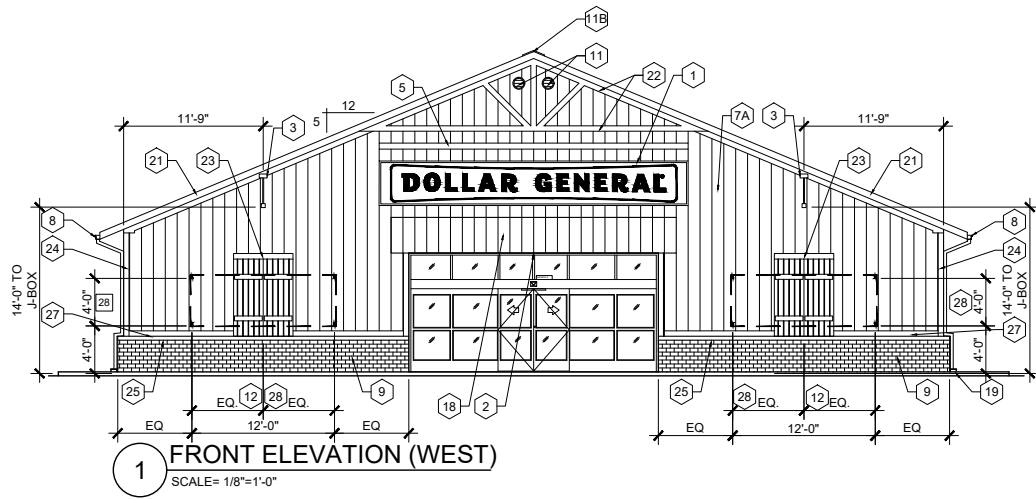


# EXTERIOR ELEVATIONS

Coded Black and White Elevations



EXTERIOR FINISHES	SHERWIN WILLIAMS #7037 - BALANCED BEIGE	SHERWIN WILLIAMS #9003 - WARM STONE	SHERWIN WILLIAMS #7041 - "VAN DYKE" BROWN	METALLIC BRONZE	WHITE
EXTERIOR FINISHES ARE TO MATCH OR BE EQUAL TO STANDARDS SHOWN UNLESS AUTHORITY HAVING JURISDICTION DOES NOT ALLOW.					
GUTTERS				•	
DOWN SPOUTS	•				
SIDES AND REAR OF BUILDING FIBER CEMENT SIDING & TRIM, RECEIVING & EMERGENCY EXIT DOORS (EXTERIOR OF DOORS TO BE PAINTED, REFER TO DOOR SCHEDULE FOR INTERIOR)	•				
FRONT OF BUILDING FIBER CEMENT SIDING & TRIM			•		
BRICK (NATURAL SIMILAR COLOR ALLOWED)		•			
SOFFITS AT STOREFRONT ENTRANCE AND UNDER EAVES					•
STANDING SEAM METAL AWNING				•	
STOREFRONT SYSTEM				•	
LINER PANELS (INTERIOR SALES AND RECEIVING FLOOR)					•

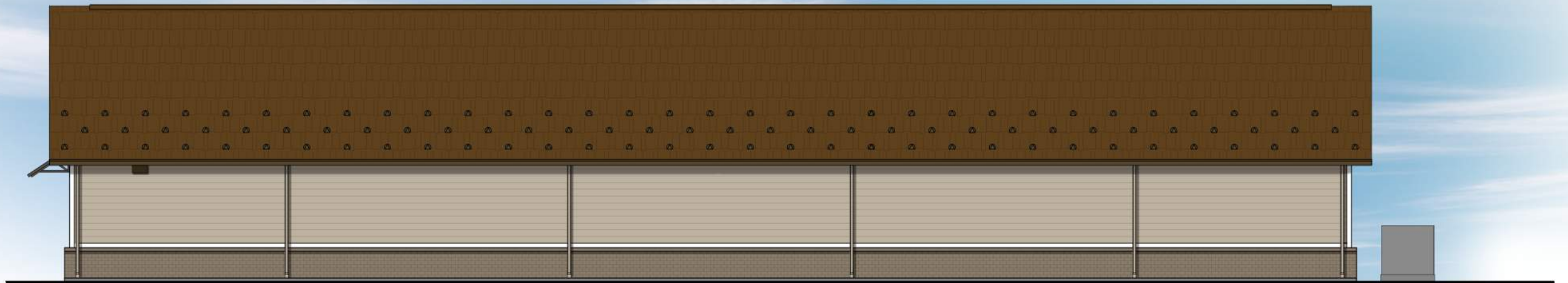
- ELEVATION KEYED NOTES**
- 1 SIGN FURNISHED AND INSTALLED BY DOLLAR GENERAL CORP. WITH CIRCUIT AS NOTED ON ELECTRICAL PLAN. SIGN TO BE CENTERED ON FRONT OF BUILDING. CONTRACTOR IS TO PROVIDE ADEQUATE BLOCKING AS REQUIRED BY SIGN MANUFACTURER TO SUPPORT SIGN WEIGHT OF UP TO 1,400 LBS. COORDINATE THE PROPER SIGNAGE TO BE USED WITH DOLLAR GENERAL.
  - 2 LED SECURITY LIGHT. REFER TO ELECTRICAL DRAWINGS FOR ADDITIONAL INFORMATION.
  - 3 FLOOD LIGHT REFER TO ELEC. DRAWINGS FOR ADDITIONAL INFORMATION.
  - 4 LED WALL PACK. REFER TO ELECTRICAL DRAWINGS FOR ADDITIONAL INFORMATION.
  - 5 LED BAR LIGHT FOR SIGNAGE. REFER TO ELECTRICAL DRAWINGS FOR ADDITIONAL INFORMATION AND COORDINATE FINAL LOCATION AND TYPE WITH SIGN VENDOR.
  - 6 NOT USED.
  - 7 PRE-PAINTED FIBER CEMENT SIDING - SMOOTH SURFACE, 8" EXPOSURE. SEE FINISH LEGEND FOR PREFERRED COLOR
  - 7A PRE-PAINTED FIBER CEMENT 12" VERTICAL SIDING - SMOOTH SURFACE. SEE FINISH LEGEND FOR PREFERRED COLOR
  - 8 PRE-FINISHED METAL GUTTER AND DOWNSPOUT
  - 9 BRICK VENEER - STANDARD OR ECONOMY SIZE ACCEPTABLE - SEE FINISH LEGEND FOR PREFERRED COLOR
  - 10 ASPHALT SHINGLE ROOFING OVER #15 FELT VAPOR BARRIER OVER 5/8" PLYWOOD ROOF DECK.
  - 11 1" DIAMETER VENTS IN WALL NEAR TOP OF GABLE
  - 11A 2" DIAMETER VENTS IN WALL NEAR TOP OF GABLE
  - 11B RIDGE VENT AT TOP OF GABLES
  - 12 PRE-PAINTED FIBER CEMENT SHUTTERS PER DETAIL 6/A201 - SEE FINISH LEGEND FOR PREFERRED COLOR
  - 13 VENT FOR BATHROOM EXHAUST. REFER TO M01 FOR ADDITIONAL INFORMATION.
  - 14 DOOR BUZZER. REFER TO ELECTRICAL DRAWINGS FOR ADDITIONAL INFORMATION.
  - 15 NOT USED.
  - 16 PAD-MOUNTED HVAC UNITS. REFER TO MECHANICAL SHEET AND SITE PLAN FOR MORE SIZING/LOCATION INFORMATION.
  - 17 OUTSIDE AIR TEMP. SENSOR MOUNTED OVER RECEIVING DOORS @ 8'-0" A.F.F.
  - 18 24' LONG STANDING SEAM METAL AWNING OVER FRONT ENTRANCE
  - 19 FINISHED GRADE AT EXTERIOR WALLS SHALL BE A MINIMUM OF 6" BELOW FINISHED FLOOR AT ALL NON PAVED AREAS.
  - 20 IN NORTHERN CLIMATES, PROVIDE SNOW GUARDS ON ROOF PER LOCAL CODE.
  - 21 PRE-FINISHED ALUMINUM BREAK METAL RAKE TRIM AND/OR FASCIA TRIM OVER 2x8" FASCIA BOARDS
  - 22 PRE-PAINTED SMOOTH SURFACE 8" FIBER CEMENT TRIM BOARDS BELOW SOFFITS AND IN DECORATIVE PATTERN PER 5/A201. SEE FINISH LEGEND FOR PREFERRED COLOR.
  - 23 PRE-PAINTED SMOOTH SURFACE FIBER CEMENT BOARD TRIM HEADER AT FAUX WINDOW DETAIL. BRICK ROWLOCK COURSE AT TOP OF BRICK
  - 24 PRE-PAINTED 5/4"x8" SMOOTH SURFACE FIBER CEMENT BOARD CORNER TRIM. SEE FINISH LEGEND FOR PREFERRED COLOR.
  - 25 BRICK ROWLOCK COURSE AT TOP OF BRICK
  - 26 NOT USED
  - 27 PRE-PAINTED 5/4"x8" SMOOTH SURFACE FIBER CEMENT PANEL ABOVE BRICK ROWLOCK COURSE
  - 28 1/2" DIAMETER x 6" LONG STAINLESS STEEL EYE BOLTS (CLOSED) WITH 1" DIAMETER OPENINGS. CONNECT BACK TO BLOCKING IN WOOD STUD WALL. AND CAULK AND SEAL OPENINGS. 4 BOLTS TO BE LOCATED AS SHOWN EACH SIDE OF ENTRY, TOTAL OF 8 BOLTS.
  - 29 MOUNT SATELLITE DISH TO REAR WALL AND RAISE ABOVE ROOF LEVEL AS-REQUIRED - RUN CONDUIT FROM DISH TO BUILDING AND INTO CABLE TRAY
  - 30 PREPAINTED 5/4"x4" SMOOTH FIBER CEMENT BOARD TRIM AROUND DOOR FRAME

**EXTERIOR ELEVATIONS**

Rendered Elevations



2 FRONT ELEVATION (WEST)



1 RIGHT ELEVATION (SOUTH)

**EXTERIOR ELEVATIONS**

Rendered Elevations



2 REAR ELEVATION (EAST)



1 LEFT ELEVATION (NORTH)